

ROOFING
EVALUATION, DESIGN
& REPLACEMENT



SILVER/PETRUCELLI+ASSOCIATES
Architects / Engineers / Interior Designers

3190 Whitney Avenue | Hamden CT 06518
203.230.9007 | silverpetrucelli.com
info@silverpetrucelli.com



SILVER/PETRUCELLI+ASSOCIATES
Architects / Engineers / Interior Designers

ROOFING
EVALUATION, DESIGN &
REPLACEMENT

S/P+A BY THE NUMBERS

1991

Year S/P+A Was Founded

49

Number of Current Staff

3

Roofing Designers
on Staff

12

Licensed Architects
on Staff

17

Professional Engineers
on Staff

4

Interior Designers
on Staff

6,500,000 SF

Amount of Roofing Evaluated,
Designed or Replaced

1.6%

Average change orders as
a percent of bid on roofing projects

75%

Percentage of all Roofing Projects
completed under Office of School
Construction Grants and Review

165,644 SF

Size of our largest single roof
replacement project to date
(Lyman Hall HS, Wallingford)

1750kW

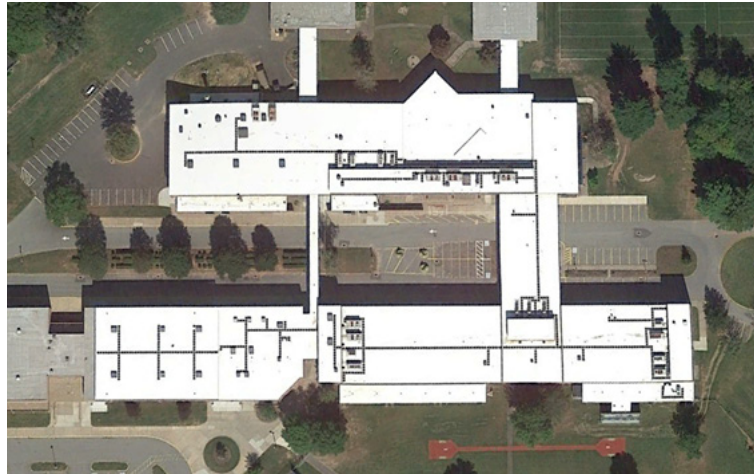
Largest PV system designed in-
house for a school system

12 Years

Amount of time we were on-call
to the State of CT DCS for roof
replacement and design

North Branford

The location of our first
school roofing project



Haddam-Killingworth
High School,
Region 17 Schools,
Haddam

135,000 s.f.; \$2 Million
(EPDM (rubber))



System-wide Roof Replacements, Wallingford
700,000 s.f.; \$13 Million
(Modified Bitumen Membrane)



Long Hill & Elizabeth Shelton ES, Shelton
53,635 s.f. & 52,065 s.f.; \$2.35 Million
(Modified Bitumen Membrane)



Ledyard High School
46,000 s.f.; \$844,000
(TPO Membrane)



Cox Middle School, Guilford
64,143 s.f.; \$1.9 Million
(Asphalt Shingle)



King's Highway Elementary School, Westport
HVAC Rooftop System Study



East Lyme High School
HVAC Design and Replacement



SILVER/PETRUCELLI+ASSOCIATES
Architects / Engineers / Interior Designers

**ROOFING
EVALUATION, DESIGN &
REPLACEMENT**



Cox Middle School, Guilford
64,143 s.f.; \$1.9 Million
(Synthetic Shingle)



Bethany Community School, Bethany
43,592 s.f.; \$542,073
(Modified Bitumen)



Bassick High School, Bridgeport
35,500 s.f.; \$1.1 Million
(Modified Bitumen)



Central School, Killingly
48,296 s.f.; \$1.1 Million
(Modified Bitumen Membrane)



Mill Hill Elementary School, Fairfield
14,170 s.f.; \$461,000
(Modified Bitumen Membrane)



Willard-Cybulski Correctional Center, Enfield
120,250 s.f.; \$1.9 Million
Roof Replacement (Asphalt Shingle) and New Stair Tower



Veteran's Home, Rocky Hill
117,961 s.f.; \$2.5 Million
(Asphalt Shingle)



Bishop's Orchard, Guilford
19,418 s.f.; \$442,000
(Standing Seam Metal)



Bronwell Hall, SCSU, New Haven
15,174 s.f.; \$810,000
(Modified Bitumen Membrane & 305W Solar)



Norwalk Community College
137,000 s.f.; \$2.93 Million
(EPDM & Standing Seam Metal)





Dean A. Petrucci, AIA
*Principal &
Vice President*

David J. Stein, AIA
*Principal &
Project Manager*

Robert R. Banning, P.E.
*Principal &
Chief Electrical Engineer*

William R. Silver, AIA
*Principal &
President*

**Kenneth J. Sgorbati, P.E.,
LEED AP**
*Principal &
Engineering Manager*

Professional Registrations

- ▶ Architect: CT
- ▶ Interior Designer: CT

Education

- ▶ B.S. Architectural Engineering Technology, NY Institute of Technology
- ▶ A.S. Architectural Engineering, Norwalk State Technical College

Professional Registrations

- ▶ Architect: CT, VT, NY
- ▶ Interior Designer: CT

Education

- ▶ B. Arch., Pratt Institute
- ▶ A.S. Architectural Engineering, Norwalk State Technical College
- ▶ Summer Program, Rhode Island School of Design
- ▶ Design Certificate, University of Copenhagen

Professional Registrations

- ▶ Engineer: CT, MA

Education

- ▶ B.S. Electrical Engineering, University of Connecticut
- ▶ A.S. Nuclear Technology, Thames Valley Technical College

Professional Registrations

- ▶ Architect: CT, NY, RI, MA, MD, NH, NJ, ME, PA
- ▶ Interior Designer: CT
- ▶ Historical Architect: CT State Historic Commission

Education

- ▶ M. Arch., Rensselaer Polytechnic Institute
- ▶ Certificate, Architectural Association, London, England
- ▶ B. Environmental Design, Miami University (Ohio)

Professional Registrations

- ▶ Engineer: CT, NY, MA, RI, NJ, PA, DE, MD, VA, OH, FL, ME, NH, VT

Education

- ▶ B.S. Mechanical Engineering, University of Connecticut (Pi Tau Sigma Honor Fraternity)
- ▶ The Hartford Graduate Center, Courses in Engineering
- ▶ Professional seminars offered by ASHRAE, NFPA and ASPE

